



Aggregate Washer

Overview

The H-3949 Aggregate Washer automatically washes aggregate to remove clay and other fines capable of passing a #200 sieve. Using the auto aggregate washer eliminates inconsistencies and the high cost of typical manual methods. In operation, the inclined, motorized, stainless steel drum rotates to agitate the sample until water overflow from the lip of the drum is clear. The drum is driven by a 1-1/2 hp 115V 60Hz AC, 1 amp motor totally enclosed motor. The drum tilts and locks below horizontal to flush out the washed sample. A permanent water connection with a valve is provided. Overall dimensions are: 26" x 18" x 26" with the drum in the upright position.

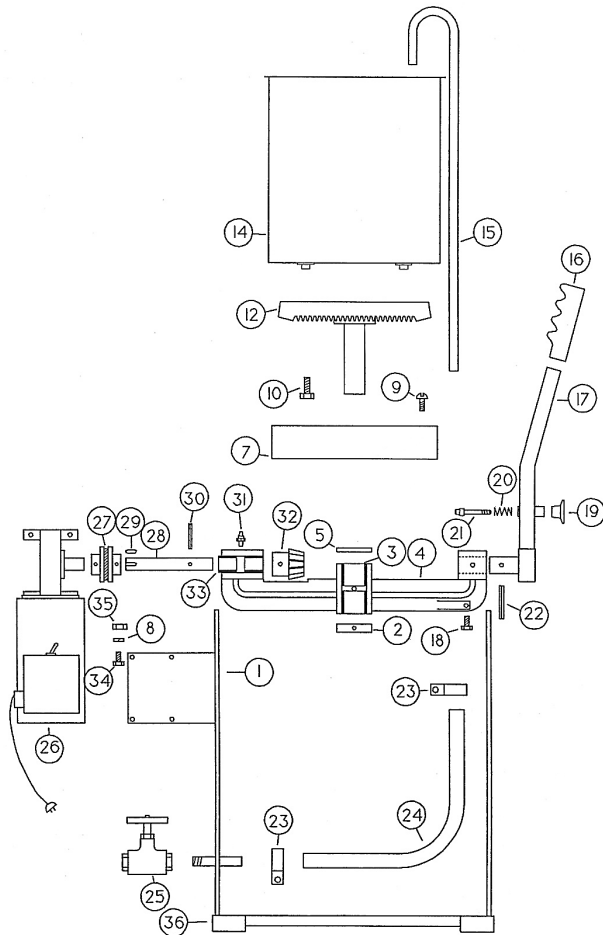
A 12", 200 mesh, sieve and a 12" sieve pan are recommended to be used with the unit to catch overflow, but are not included. Order H-3912FS200, brass frame, stainless mesh sieve and H-3912P brass sieve pan for this purpose.

220V 50/60Hz Operation

To use the H-3949 in 220V 50/60 Hz applications, proceed as follows: Mount the included transformer in a convenient location near the machine. Plug the transformer cord into a 220V receptacle, plug the motor cord into the transformer and the machine is ready to operate.

Maintenance

Weekly Lubrication of the two grease fittings with a grease gun is highly recommended for reliable operation. Add grease until it is coming out at the bearing ends. Also, make sure the gears are greased as well. The gearmotor needs no attention as it is permanently packed with lubricant.



#	Description	Qty.
1	Frame	1
2	Collar	1
3	Bushing	2
4	Yoke Assembly (w/bushings)	1
5	Washer	1
7	Guard	1
8	Lockwasher	4
9	Bolt	4
10	Hex-Capscrew	4
12	Large Gear Assemb	1
14	Bucket	1
15	Flow-Tube	1
16	Grip	1
17	Handle Assy.	1
18	Hex Capscrew	1
19	Knob	1
20	Spring	1

#	Description	Qty.
21	Shotpin	1
22	Rollpin	1
23	Hose Clamp	2
24	Hose	1
25	Valve	1
26	Gear Motor Assembly	1
27	Coupling Assy.	1
28	Shaft	1
29	Key	1
30	Roll pin	1
31	Greasefittirig	2
32	Small Gear	1
33	Bushing	2
34	Hex Mach. Bolt	4
35	Hex Nut	4
36	End Caps	4

Warranty

Humboldt Mfg. Co. warrants its products to be free from defects in material or workmanship. The exclusive remedy for this warranty is Humboldt Mfg. Co., factory replacement of any part or parts of such product, for the warranty of this product please refer to Humboldt Mfg. Co. catalog on Terms and Conditions of Sale. The purchaser is responsible for the transportation charges. Humboldt Mfg. Co. shall not be responsible under this warranty if the goods have been improperly maintained, installed, operated or the goods have been altered or modified so as to adversely affect the operation, use performance or durability or so as to change their intended use. The Humboldt Mfg. Co. liability under the warranty contained in this clause is limited to the repair or replacement of defective goods and making good, defective workmanship.

Humboldt Mfg. Co.

3801 North 25th Avenue
Schiller Park, Illinois 60176 U.S.A.

U.S.A. Toll Free: 1.800.544.7220

Voice: 1.708.456.6300

Fax: 1.708.456.0137

Email: hmc@humboldtmfg.com

Testing Equipment for



Construction Materials

HUMBOLDT

www.humboldtmfg.com