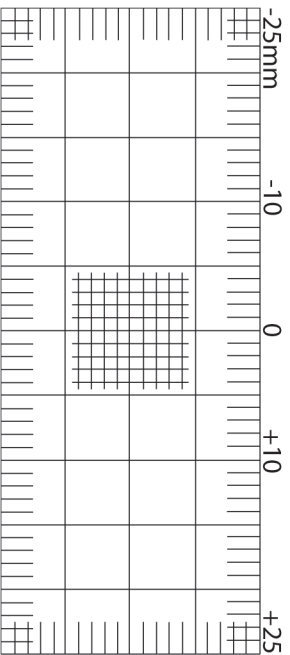


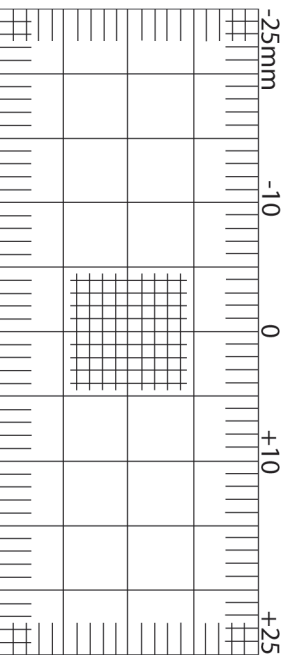
Corner Crack Monitor

Date of Reading: _____



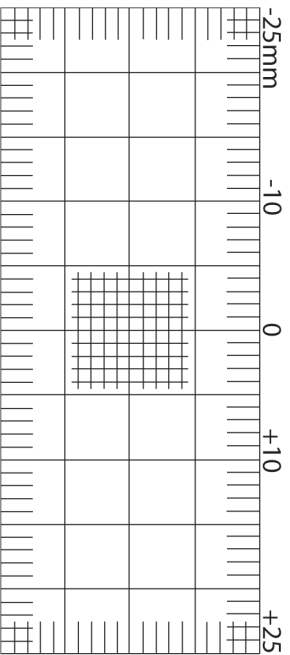
Distance Between Spigots: _____ mm

Date of Reading: _____



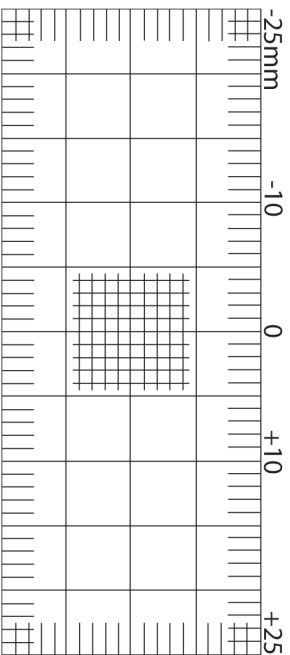
Distance Between Spigots: _____ mm

Date of Reading: _____



Distance Between Spigots: _____ mm

Date of Reading: _____



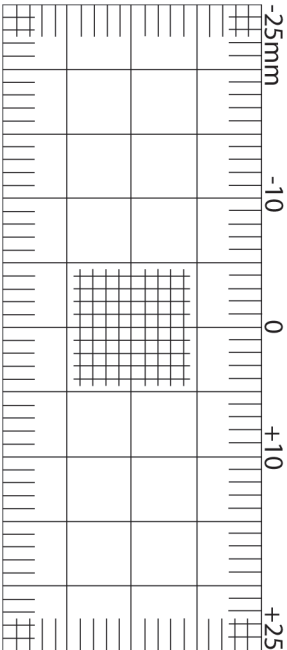
Distance Between Spigots: _____ mm



Project _____

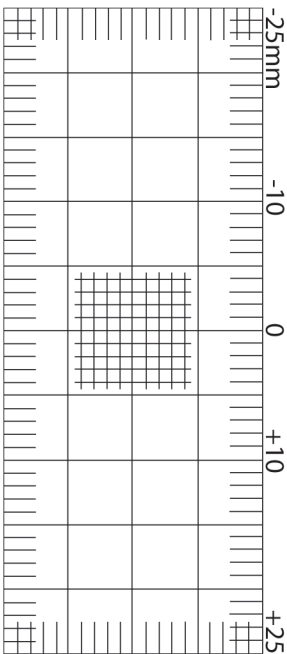
Location of Monitor _____

Date of Reading: _____



Distance Between Spigots: _____ mm

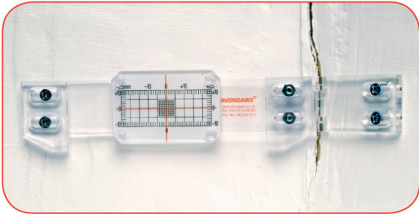
Date of Reading: _____



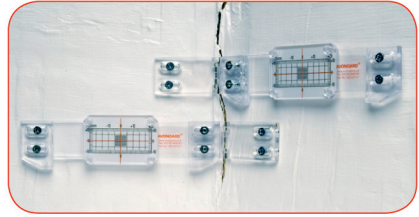
Distance Between Spigots: _____ mm

During each monitoring event, indicate on the diagrams below, the movement of the crack monitor. This should be done after the crack widths have been measured using the crack width gauge.

- + represents crack opening on horizontal scale
- represents crack closing on horizontal scale

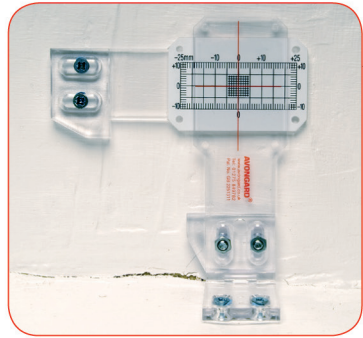


The Tell-Tale is used singly to monitor two dimensional movement.
(Ensure the scale & cursor plate is fixed on the side of the crack which is moving.)



The Tell-Tales are used in pairs and handed to monitor three dimensional movement.

The components of the Corner Tell-Tale can be reconfigured so that cracks at the junction of ceilings and walls or floors and walls can be monitored.



Humboldt Mfg. Co.
875 Tollgate Road
Elgin, Illinois 60123 U.S.A.

U.S.A. Toll Free: 1.800.544.7220
Voice: 1.708.456.6300
Fax: 1.708.456.0137
Email: hmc@humboldtmfg.com

Testing Equipment for



Construction Materials

HUMBOLDT

www.humboldtmfg.com