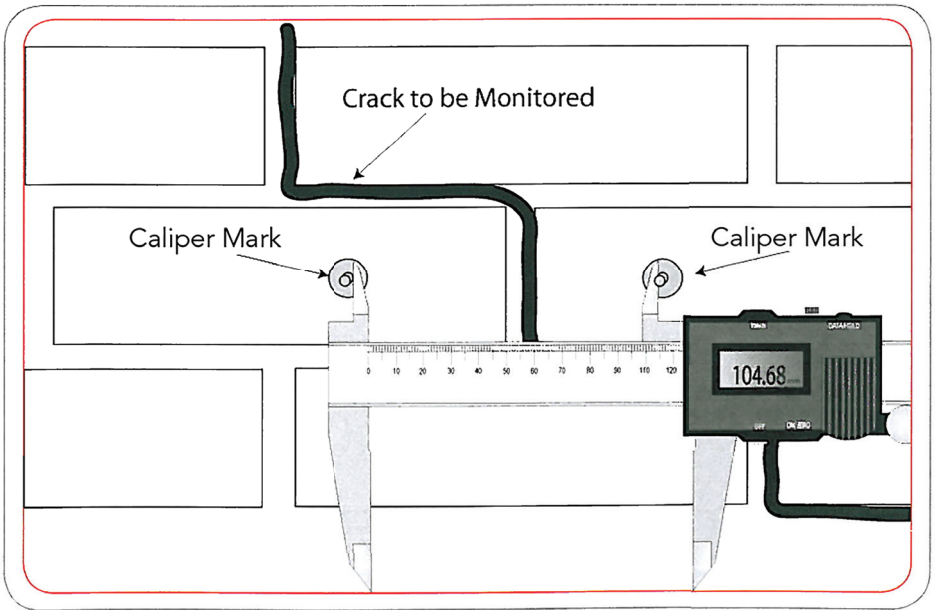




Caliper Marks



Fixing Instructions

1. Fix the Caliper Marks with adhesive about 80mm to 100mm apart on either side of the crack to be monitored.
2. The line of Caliper Marks should be perpendicular to the crack.
3. Allow the adhesive to harden thoroughly before taking the first reading.
4. The distance between the Caliper Marks is measured by locating the top caliper jaw on the inside of each Caliper Mark.

Humboldt Mfg. Co.
875 Tollgate Road
Elgin, Illinois 60123 U.S.A.

U.S.A. Toll Free: 1.800.544.7220
Voice: 1.708.456.6300
Fax: 1.708.456.0137
Email: hmc@humboldtmfg.com

Testing Equipment for



Construction Materials

HUMBOLDT

www.humboldtmfg.com